

# The Bromley St George's Row

2-bedroom home, sleeps 4



2 | 

1 | 

1 | 



Artist's impression

## Key features

- Set over three storeys
- Two double bedrooms
- En-suite from master bedroom
- Downstairs W.C.
- Open plan kitchen/living and dining room
- Spacious study/office
- Designated parking space



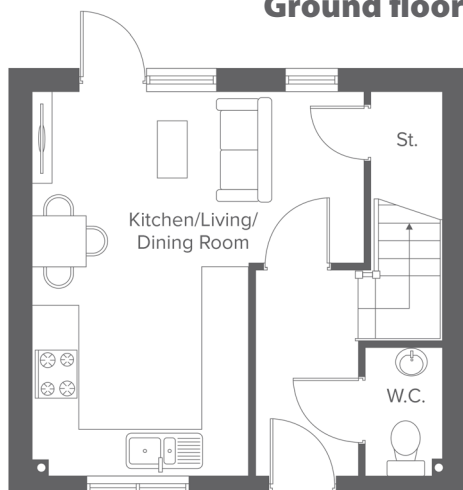
**The Bromley**  
Rent to Buy plots  
C1-C4

**St Georges Row, Pool St, Bolton, BL1 2PF**  
A range of stylish 2, 3 & 4-bedroom town houses

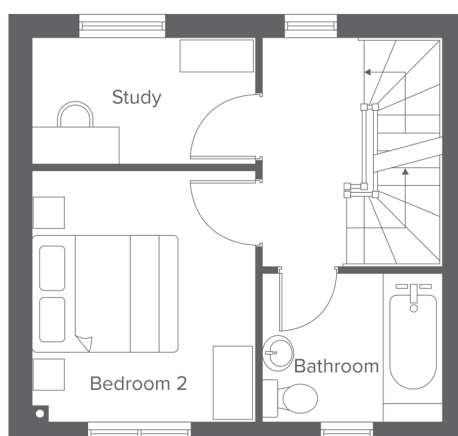
# The Bromley St George's Row

2-bedroom home, sleeps 4

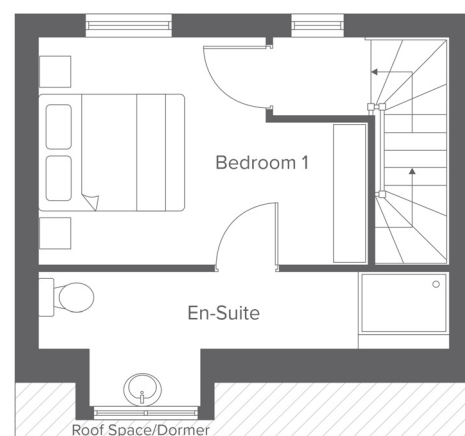
**Ground floor**



**First floor**



**Second floor**



**Total size: 76.1 sqm, 819.13 sqft**

Ground Floor	Metric	Imperial
Kitchen/Living	5.0 x 4.2	16'4" x 13'9"
W.C.	1.6 x 1.0	5'2" x 3'3"

First Floor	Metric	Imperial
Bedroom 2	3.2 x 2.8	10'5" x 9'2"
Study	1.6 x 2.8	5'2" x 9'2"
Bathroom	1.9 x 2.3	6'2" x 7'6"

Second Floor	Metric	Imperial
Bedroom 1	2.9 x 4.2	9'6" x 13'9"
En-Suite	1.0 x 5.3	3'3" x 17'4"

**Contact our team**

📞 01204 208 315

🖱️ [yourhousinggroup.co.uk](http://yourhousinggroup.co.uk)

📷 @yourhousinggroup

🐦 @Your\_Housing

📘 @yourhousing