

THE AUSTIN ROSE MEADOWS

2 | 

1 | 

1 | 



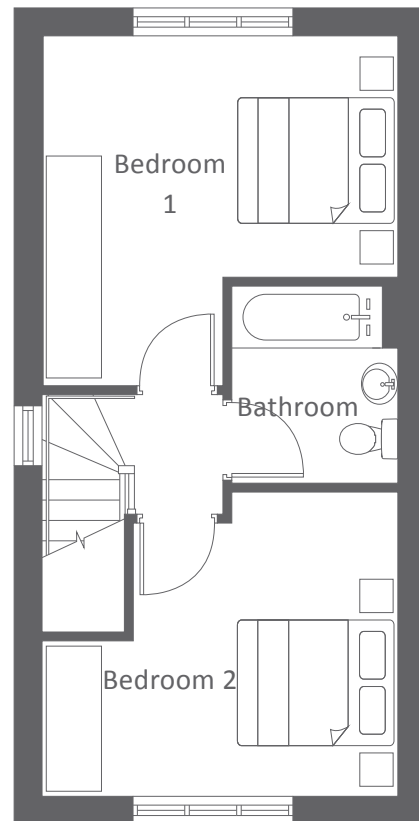
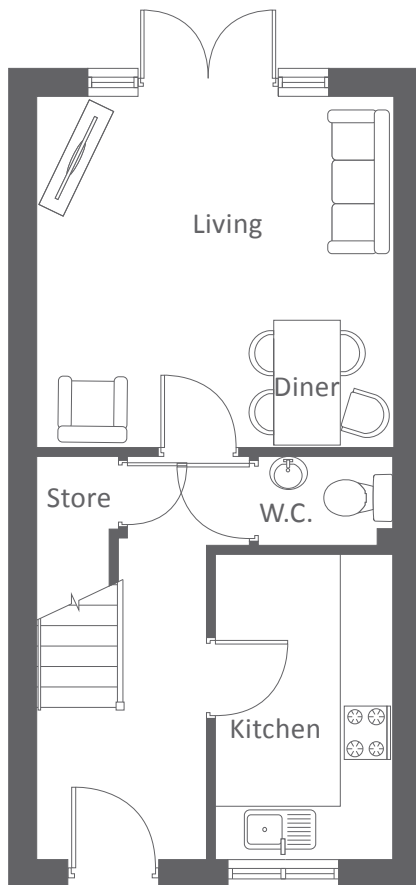
KEY FEATURES:

- Two double bedrooms
- French doors to garden
- Integrated kitchen appliances
- Open-plan living / diner
- Downstairs W.C
- Allocated parking

LANCASTER AVENUE, TYLDESLEY, M29 8LN
A collection of 40 beautifully designed two and three bedroom homes.

 **Rose Meadows**
Plots 15-32, 39 & 40


THE AUSTIN ROSE MEADOWS




Ground Floor	Metric	Imperial
Kitchen	2.0 x 3.4	6'8" x 11'3"
Living / Diner	4.0 x 4.0	13'1" x 13'1"
W.C	1.6 x 1.0	5'1" x 3'3"


First Floor	Metric	Imperial
Bedroom 1	4.0 x 4.0	13'1" x 13'1"
Bedroom 2	4.0 x 3.4	13'3" x 11'3"
Bathroom	1.9 x 2.2	6'2" x 7'4"

CONTACT OUR TEAM

 01942 419 109

 yourhousinggroup.co.uk

 /yourhousing

 @Your_Housing