

THE LANGHAM AMBERLEY SQUARE

2 | 

1 | 

1 | 



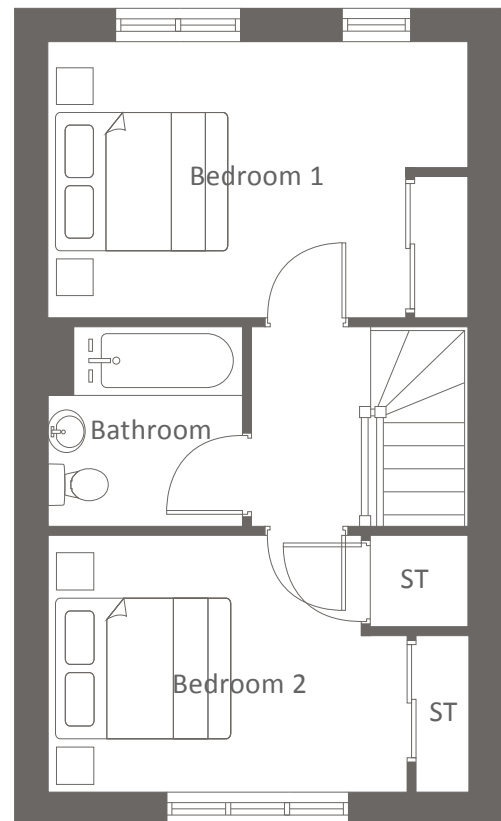
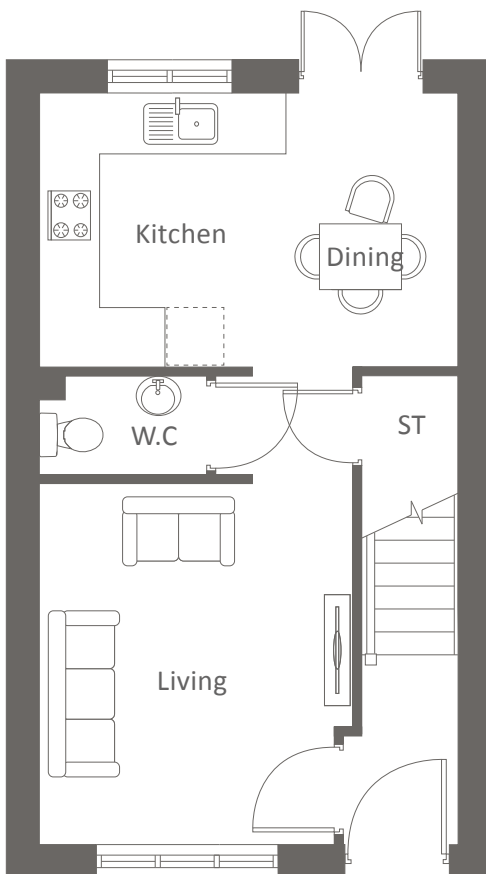
KEY FEATURES:

- Two bedrooms
- Open-plan kitchen / dining
- Allocated parking
- Downstairs W.C
- Spacious living
- French doors to garden

AMBERLEY DRIVE, WYTHENSHAW M23 2RH
A collection of beautifully designed two and three bedroom homes.

 **Amberley Square**
Plots 3 & 28

THE LANGHAM AMBERLEY SQUARE




Ground Floor


	Metric	Imperial
Kitchen / Dining	4.2 x 2.7	13'9" x 8'9"
Living	3.2 x 3.7	10'5" x 12'1"
W.C.	1.7 x 1.0	5'6" x 3'2"


First Floor


	Metric	Imperial
Bedroom 1	4.2 x 2.7	13'9" x 8'9"
Bedroom 2	4.2 x 2.7	13'9" x 8'9"
Bathroom	2.0 x 2.0	6'5" x 6'5"

CONTACT OUR TEAM

 01925 398 569

 yourhousinggroup.co.uk

 /yourhousing

 @Your_Housing