

# THE CLARIDGE AMBERLEY SQUARE

3



2



1



Artist's impression

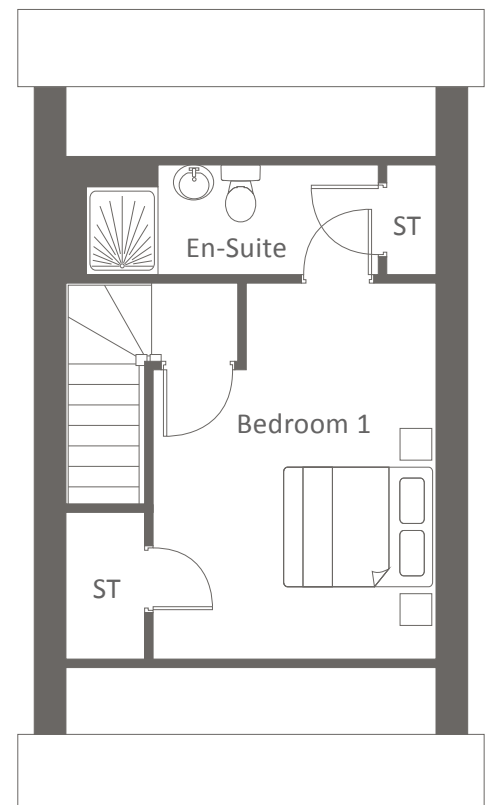
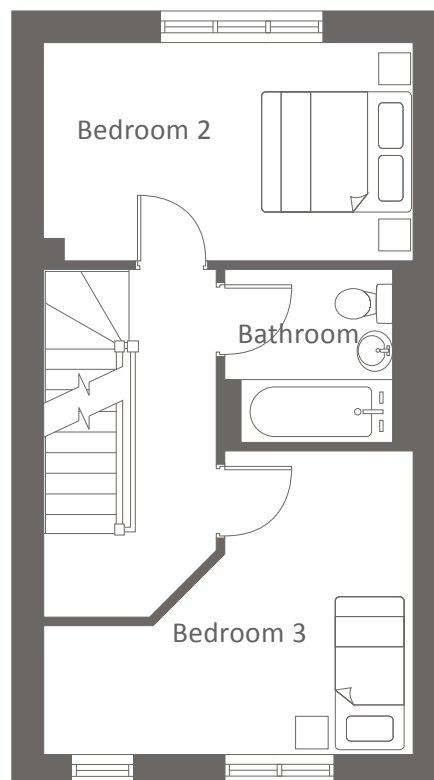
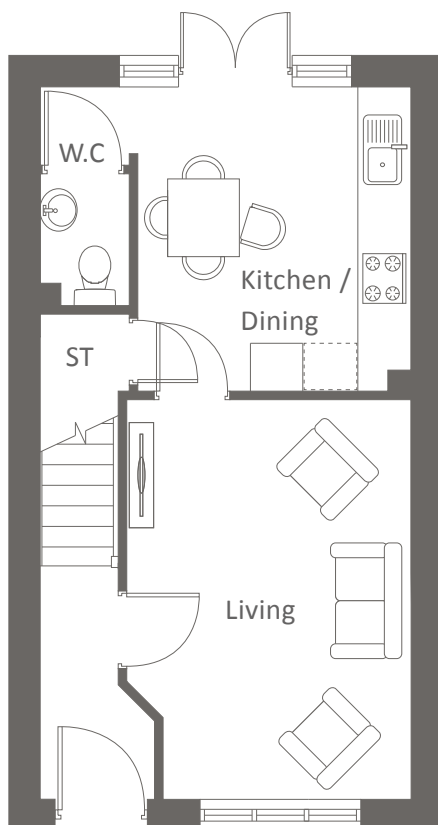
## KEY FEATURES:

- Three bedrooms
- Spacious living
- Family bathroom
- French doors to garden
- Spacious master bedroom
- Open-plan kitchen / dining

AMBERLEY DRIVE, WYTHENSHAW M23 2RH  
A collection of beautifully designed two and three bedroom homes.

 **Amberley Square**  
Plots 31, 32, 33, 34, 35 & 36

# THE CLARIDGE AMBERLEY SQUARE





Ground Floor	Metric	Imperial
Kitchen / Dining	4.2 x 3.5	13'9" x 11'4"
Living	3.1 x 4.6	10'0" x 15'3"
W.C.	1.0 x 2.0	3'2" x 6'5"


First Floor	Metric	Imperial
Bedroom 2	4.2 x 3.6	13'9" x 11'8"
Bedroom 3	4.2 x 2.5	13'9" x 8'2"
Bathroom	1.9 x 1.9	6'2" x 6'2"


Second Floor	Metric	Imperial
Bedroom 1	3.2 x 4.3	10'5" x 14'2"
En-Suite	3.2 x 1.3	10'5" x 4'1"

CONTACT OUR TEAM

 01925 398 569

 [yourhousinggroup.co.uk](http://yourhousinggroup.co.uk)

 /yourhousing

 @Your\_Housing