

THE WESTMINSTER AMBERLEY SQUARE

3



2



1



KEY FEATURES:

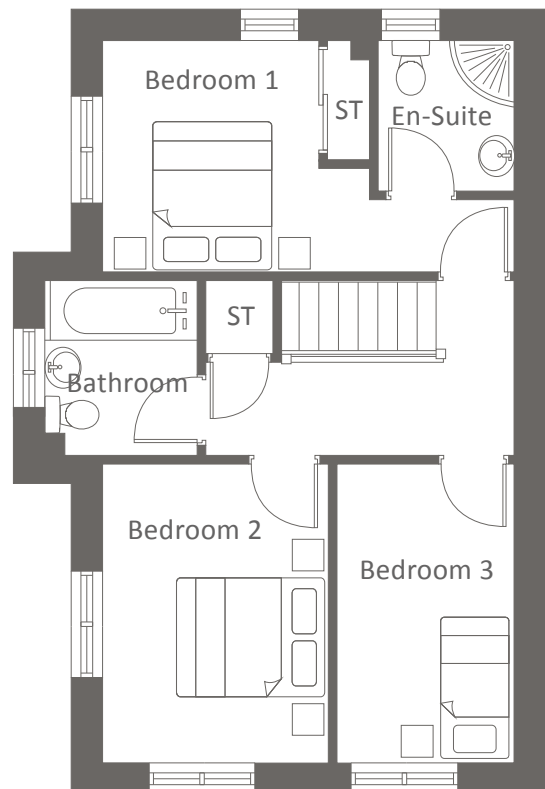
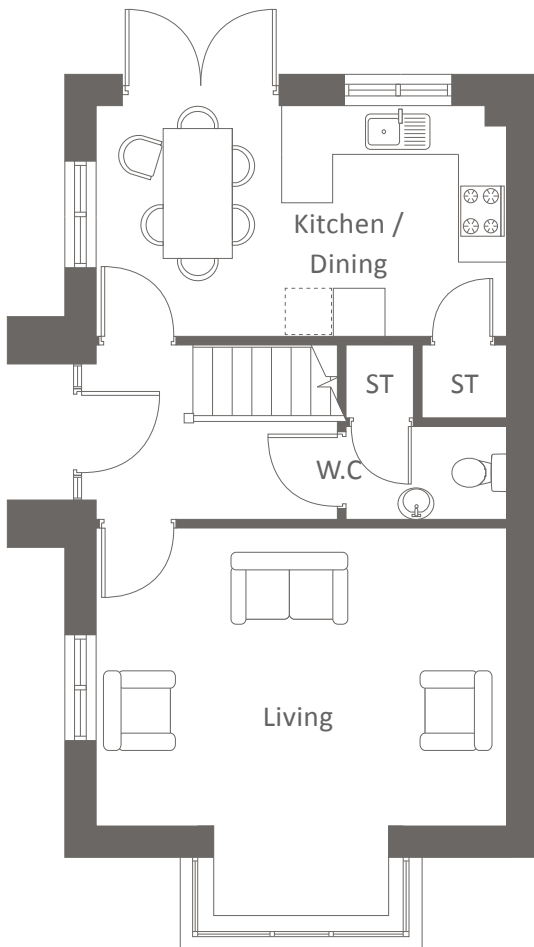
- Three bedrooms
- Family bathroom
- Built-in storage space
- Spacious living
- Open-plan kitchen / dining
- French doors to garden

AMBERLEY DRIVE, WYTHENSHAW M23 2RH
A collection of beautifully designed two and three bedroom homes.



Amberley Square
Plots 12, 27 & 37


THE WESTMINSTER AMBERLEY SQUARE





Ground Floor	Metric	Imperial
Kitchen / Dining	4.9 x 2.7	16'1" x 8'9"
Living	4.9 x 4.7	16'1" x 15'4"
W.C.	1.9 x 1.1	6'2" x 3'8"


First Floor	Metric	Imperial
Bedroom 1	4.9 x 2.7	16'1" x 8'9"
En-Suite	1.6 x 1.8	5'2" x 5'10"
Bedroom 2	2.7 x 3.7	8'9" x 12'1"
Bedroom 3	2.2 x 3.7	7'1" x 12'1"
Bathroom	1.8 x 2.0	5'10" x 6'5"

CONTACT OUR TEAM

 01925 398 569

 yourhousinggroup.co.uk

 /yourhousing

 @Your_Housing