

THE MAYFAIR AMBERLEY SQUARE

2



2



1



Artist's impression

KEY FEATURES:

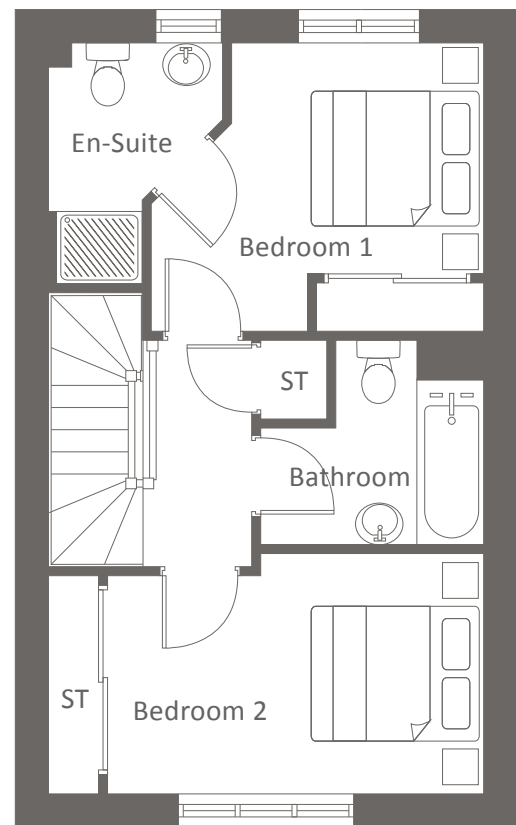
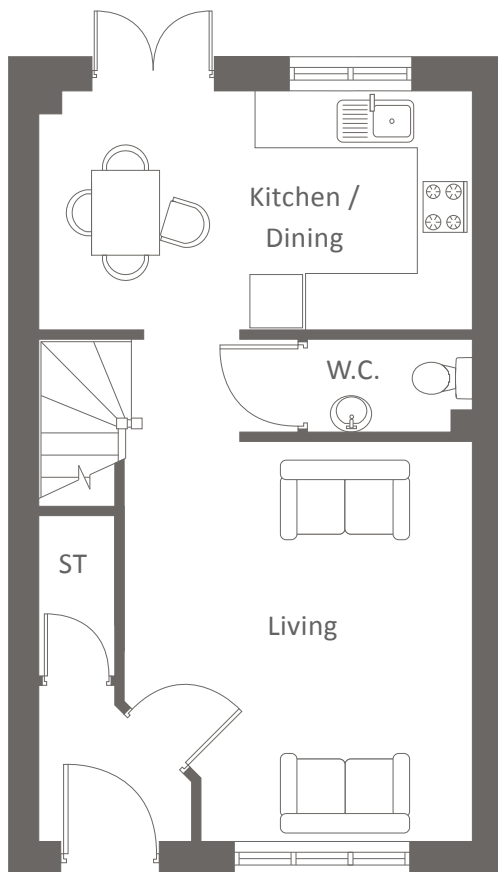
- Two bedrooms
- Open-plan kitchen / dining
- French doors to garden
- Built-in storage space
- Modern living
- Spacious bathroom

AMBERLEY DRIVE, WYTHENSHAW M23 2RH
A collection of beautifully designed two and three bedroom homes.



Amberley Square
Plots 29 & 30

THE MAYFAIR AMBERLEY SQUARE




Ground Floor


	Metric	Imperial
Kitchen / Dining	4.5 x 2.6	14'9" x 8'2"
Living	3.6 x 4.3	11'8" x 14'2"
W.C.	1.7 x 1.0	5'6" x 3'2"


First Floor


	Metric	Imperial
Bedroom 1	3.4 x 3.0	11'2" x 9'10"
En-Suite	1.8 x 2.6	5'10" x 8'2"
Bedroom 2	4.5 x 2.7	14'9" x 8'9"
Bathroom	2.3 x 2.1	7'6" x 6'11"

CONTACT OUR TEAM

 01925 398 569

 yourhousinggroup.co.uk

 /yourhousing

 @Your_Housing