

# THE PRENTON WHITEFIELD BROOK



## KEY FEATURES:

- Two double bedrooms
- Spacious kitchen/diner
- Patio doors to rear garden
- Driveway parking
- Integrated kitchen appliances
- Downstairs WC

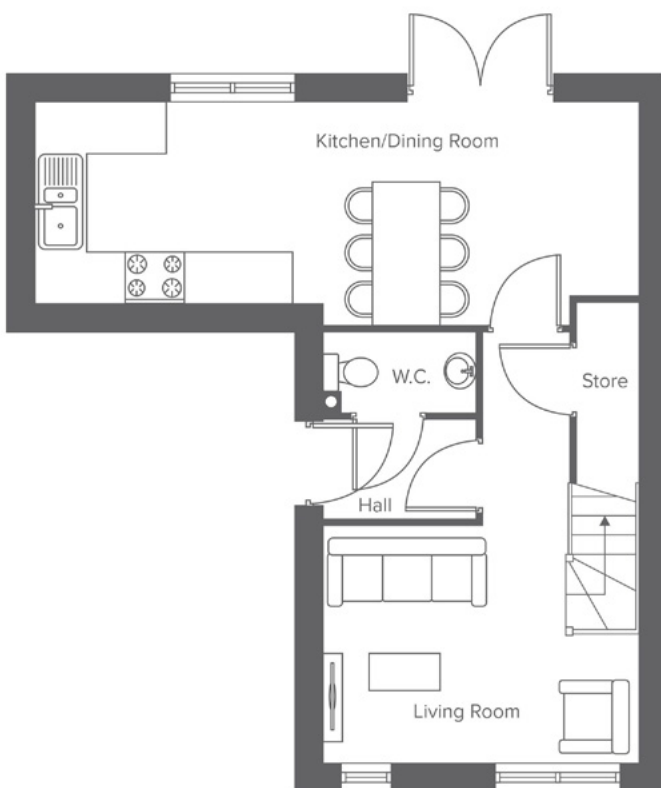


**The Prenton**  
Shared Ownership plots  
73, 74, 179, 180, 181,  
182

Private Rented plots  
70, 71, 72, 183, 186

**WHITEFIELD DRIVE, KIRKBY, LIVERPOOL L32 4TD**  
A range of bespoke two, three and four-bedroom homes.

# THE PRENTON WHITEFIELD BROOK



Ground Floor	Metric	Imperial
Kitchen/Dining	2.4 x 7.1	7'10" x 23'3"
Living Room	2.8 x 3.7	9'2" x 12'1"
W.C.	0.9 x 1.8	2'11" x 5'10"

First Floor	Metric	Imperial
Bedroom 1	2.9 x 3.7	9'6" x 12'1"
Bedroom 2	3.0 x 3.7	9'10" x 12'1"
Bathroom	2.0 x 1.7	6'6" x 5'6"

CONTACT OUR TEAM

📞 0151 601 8934

🌐 yourhousinggroup.co.uk

📧 @yourhousinggroup

🐦 @Your\_Housing

📘 @yourhousing