

THE ELM EDGEFIELD GREEN



4 | 

2 | 

1 | 

SEMI-DETACHED
AND TERRACE
OPTIONS
AVAILABLE



Artist's impression



Artist's impression

KEY FEATURES

- Set over three storeys
- Two double bedrooms
- Two single bedrooms
- Downstairs W.C.
- Open plan living/dining area
- Two family bathrooms
- Patio doors to rear garden
- Driveway parking



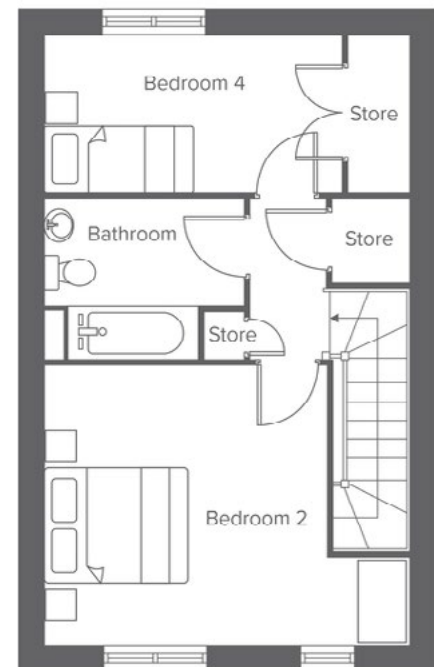
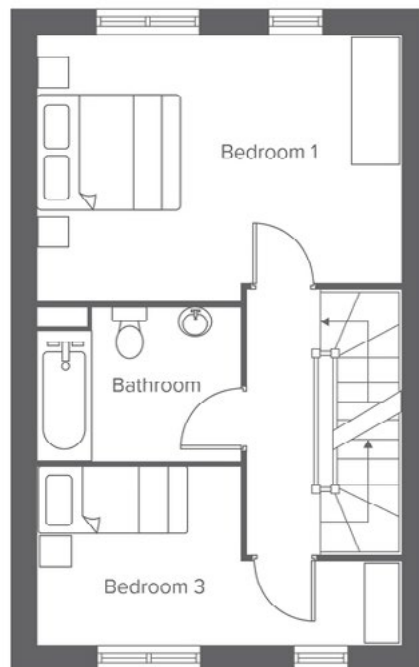
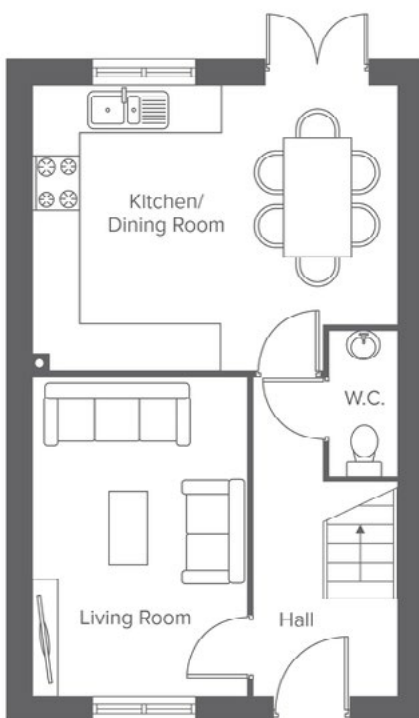
The Elm
Shared Ownership plots
84-85, 165-166, 171,
174, 199, 202

Rent to Buy plots
172-173, 200-201

EDGE LANE, OPENSHAW, MANCHESTER, M11 1DA
A range of stylish 2, 3 & 4-bedroom houses and 1 & 2-bedroom apartments

THE ELM EDGEFIELD GREEN

4-bedroom home, sleeps 6



Total size: 113.3 sqm, 1,219 sqft


Ground Floor	Metric	Imperial
Kitchen	3.7 x 4.7	11'1" x 15'5"
Living/Dining	4.1 x 2.8	13'5" x 9'2"
W.C.	1.9 x 0.9	6'2" x 2'11"


First Floor	Metric	Imperial
Bedroom 1	3.4 x 4.7	11'1" x 15'5"
Bedroom 3	2.3 x 4.7	7'6" x 15'5"
Bathroom	2.0 x 2.6	6'6" x 8'6"


Second Floor	Metric	Imperial
Bedroom 2	3.6 x 4.7	11'9" x 15'5"
Bedroom 4	2.1 x 3.8	6'10" x 12'5"
Bathroom	2.2 x 2.6	7'2" x 8'2"


CONTACT OUR TEAM

 0161 516 3779

 yourhousinggroup.co.uk

 @yourhousinggroup

 @Your_Housing

 @yourhousing