

THE MAPLE (C) EDGEFIELD GREEN



2 | 

1 | 

1 | 



Artist's impression

KEY FEATURES

- One double bedroom
- One single bedroom
- Open plan kitchen/dining area
- Downstairs W.C.
- Spacious living room
- Three-piece family bathroom
- Patio doors to rear garden
- Driveway parking

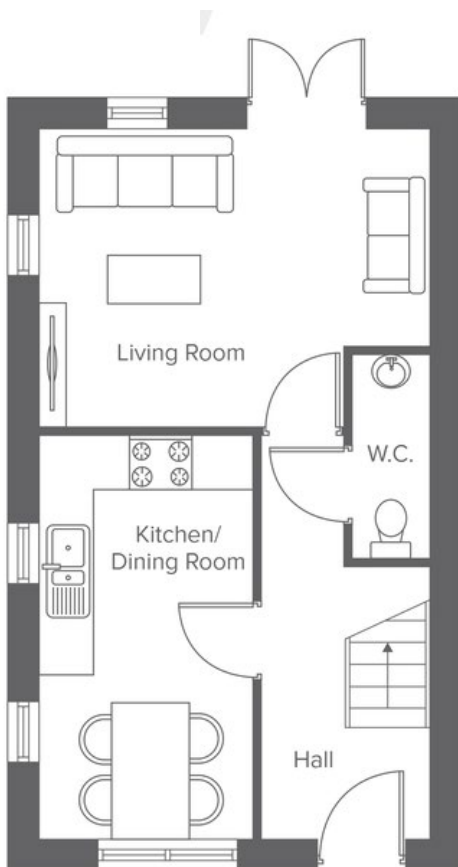


The Maple (C)
Shared Ownership plots
183, 186, 211

EDGE LANE, OPENSHAW, MANCHESTER, M11 1DA
A range of stylish 2, 3 & 4-bedroom houses and 1 & 2-bedroom apartments

THE MAPLE (C) EDGEFIELD GREEN

2-bedroom home, sleeps 3





Total size: 71.3 sqm, 767 sqft


Ground Floor	Metric	Imperial
Kitchen/Dining	4.6 x 2.4	15'1" x 7'10"
Living Room	3.4 x 4.4	11'1" x 14'5"
W.C.	2.3 x 0.8	7'6" x 2'7"


First Floor	Metric	Imperial
Bedroom 1	3.4 x 4.4	11'1" x 14'5"
Bedroom 2	2.6 x 3.2	8'6" x 10'5"
Bathroom	2.0 x 2.2	6'6" x 7'2"


CONTACT OUR TEAM

 0161 516 3779

 yourhousinggroup.co.uk

 @yourhousinggroup

 @Your_Housing

 @yourhousing