

The Edgerton St George's Row

4-bedroom home, sleeps 7

4 | 

2 | 

1 | 



Artist's impression

Key features

- Set over four storeys
- Three double bedrooms
- En-suite from master bedroom
- Downstairs W.C.
- Terrace from master bedroom
- Open plan kitchen/dining area
- Separate family room
- Driveway parking



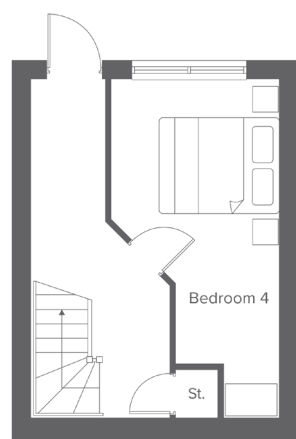
The Edgerton
Shared Ownership plots
E5-E6

Rent to Buy plots
E1-E4

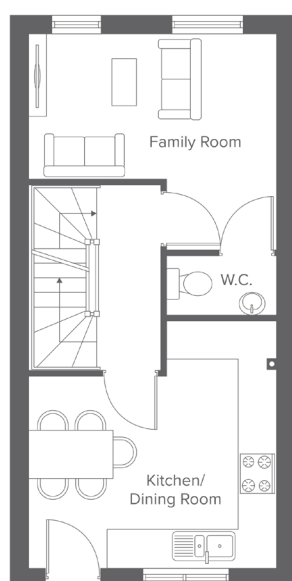
St Georges Row, Pool St, Bolton, BL1 2PF
A range of stylish 2, 3 & 4-bedroom town houses

The Edgerton St George's Row

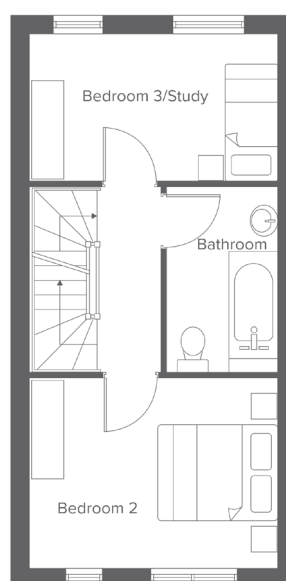
4-bedroom home, sleeps 7



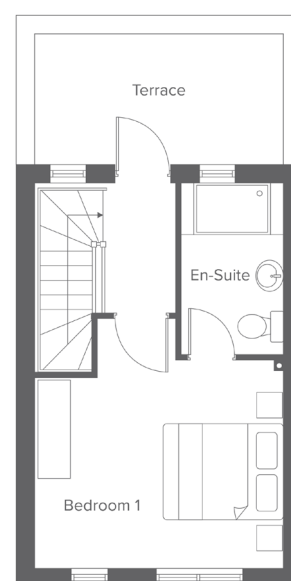
Lower ground floor



Ground floor



First floor



Second floor

Total size: 106.1 sq.m, 1,140.97 sqft

Lower Ground	Metric	Imperial
Bedroom 4	5.3 x 2.6	17'4" x 8'6"

Ground Floor	Metric	Imperial
Kitchen/Dining	4.7 x 3.8	15'5" x 12'5"
Family room	3.3 x 3.8	10'9" x 12'5"
W.C.	0.9 x 1.6	2'11" x 5'2"

First Floor	Metric	Imperial
Bedroom 2	3.0 x 3.8	9'10" x 12'5"
Bedroom 3	2.3 x 3.8	7'6" x 12'5"
Bathroom	2.9 x 1.7	9'6" x 5'6"

Second Floor	Metric	Imperial
Bedroom 1	3.3 x 3.8	10'9" x 12'8"
En-Suite	2.7 x 1.6	8'10" x 5'2"

Contact our team

📞 01204 208 315

🖱️ yourhousinggroup.co.uk

📷 @yourhousinggroup

🐦 @Your_Housing

📘 @yourhousing