

The Woburn + Century Mill

3-bedroom home, sleeps 5



3 | 

2 | 

1 | 



Artist's impression

Key features

- Set over three storeys
- Two double bedrooms
- En-suite from master bedroom
- Downstairs W.C.
- Open plan kitchen/dining room
- Separate study/office
- Driveway parking



The Woburn + Available plots

68, 69, 70, 71, 72,
73, 85, 86 or 87

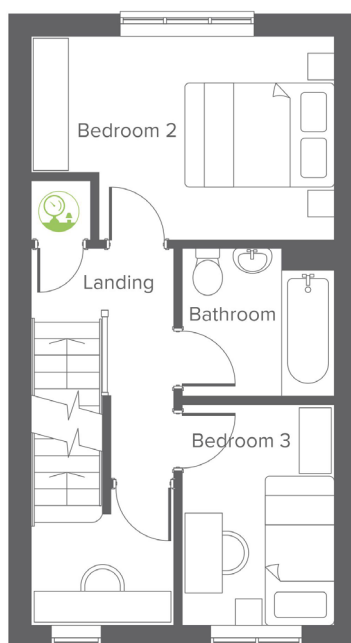
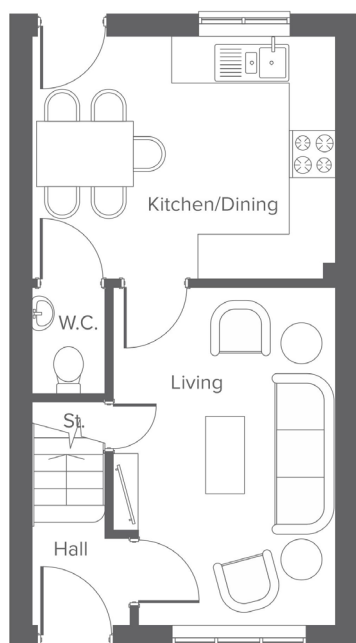
George Street, Farnworth, BL4 9QT

A collection of 106 beautifully designed new homes

Disclaimer: This document is a guide to the above development. The illustrations do not bind or imply the layout and specification will be as indicated. Please request a full development specification from the team. Correct at time of printing (October 2024). Second floor/ loft rooms will have restricted floor and head space in some areas. End terraces will have additional windows in some circumstances. Please check the specific plot with an advisor.

The Woburn + Century Mill

3-bedroom home, sleeps 5



Room for Air source
heat pump/water tank

Room	Metric	Imperial	Room	Metric	Imperial	Room	Metric	Imperial
Kitchen/Dining	4.23 x 3.28	13'10" x 10'9"	Bedroom 2	4.23 x 2.77	13'10" x 9'1"	Bedroom 1	4.17 x 5.91	13'8" x 19'4"
Living	3.08 x 4.58	10'1" x 15'0"	Bedroom 3	2.13 x 3.00	6'11" x 9'10"	En-suite	1.29 x 2.28	4'2" x 7'5"
W.C.	0.98 x 1.46	3'2" x 4'9"	Bathroom	2.12 x 2.01	6'11" x 6'7"			

Total size **90.2 m² / 971.4 ft²**

Get in touch



01204 896180



yourhousinggroup.co.uk



@yourhousing



yourhousinggroup



yhgtv