

# The Chadwick St George's Row

3-bedroom home, sleeps 5

3 | 

2 | 

1 | 



## Key features

- Set over three storeys
- Two double bedrooms
- En-suite from master bedroom
- Downstairs W.C.
- Separate kitchen
- Open plan living/dining area
- Designated parking space

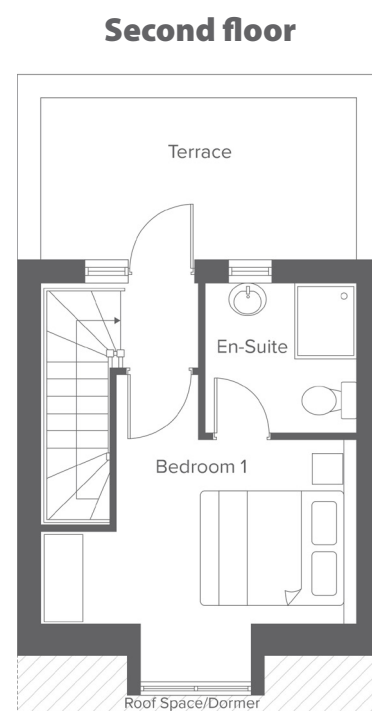
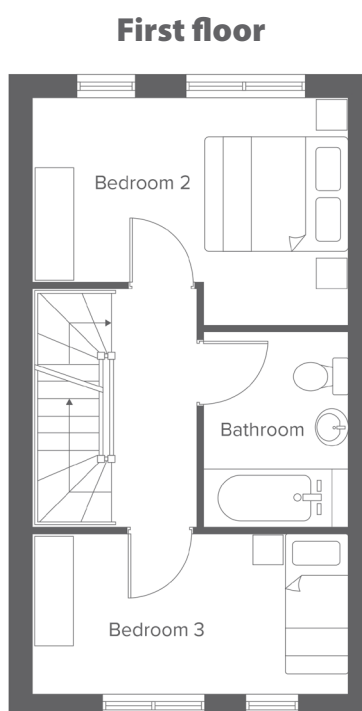
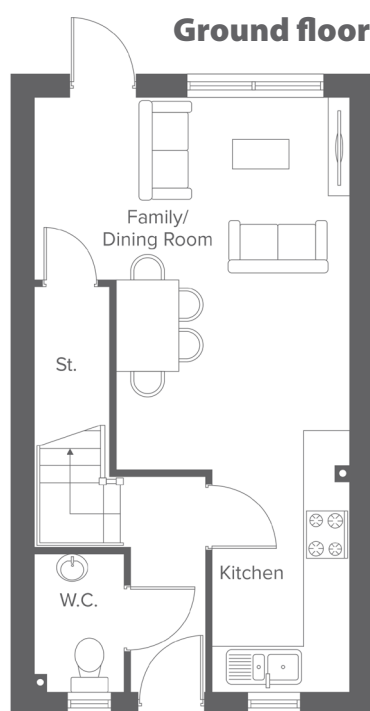


**The Chadwick**  
Rent to Buy plots  
D1-D3

**St Georges Row, Pool St, Bolton, BL1 2PF**  
A range of stylish 2, 3 & 4-bedroom town houses

# The Chadwick St George's Row

3-bedroom home, sleeps 5



**Total size: 87.5sq.m, 941.84 sqft**

Ground Floor	Metric	Imperial
Kitchen/Living	7.9 x 4.1	25'11" x 13'5"
W.C.	1.8 x 1.1	5'10" x 3'7"

First Floor	Metric	Imperial
Bedroom 2	3.0 x 4.1	9'10" x 13'5"
Bedroom 3	2.1 x 4.1	6'10" x 13'5"
Bathroom	2.5 x 1.9	8'2" x 6'2"

Second Floor	Metric	Imperial
Bedroom 1	4.0 x 4.1	13'1" x 13'5"
En-Suite	2.0 x 2.0	6'6" x 6'6"

**Contact our team**

📞 01204 208 315

🖱️ [yourhousinggroup.co.uk](http://yourhousinggroup.co.uk)

📷 @yourhousinggroup

🐦 @Your\_Housing

📘 @yourhousing