

The Crompton St George's Row

3-bedroom home, sleeps 5



3 | 

2 | 

1 | 



Artist's impression

Key features

- Set over three storeys
- Two double bedrooms
- En-suite from master bedroom
- Downstairs W.C.
- Open plan kitchen/dining/living area
- Designated parking space



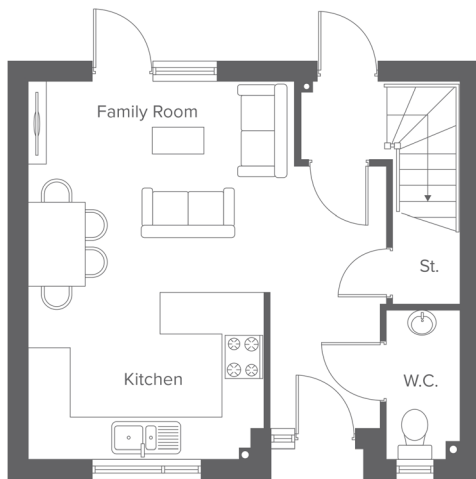
The Crompton
Rent to Buy plots
D7-D10

St Georges Row, Pool St, Bolton, BL1 2PF
A range of stylish 2, 3 & 4-bedroom town houses

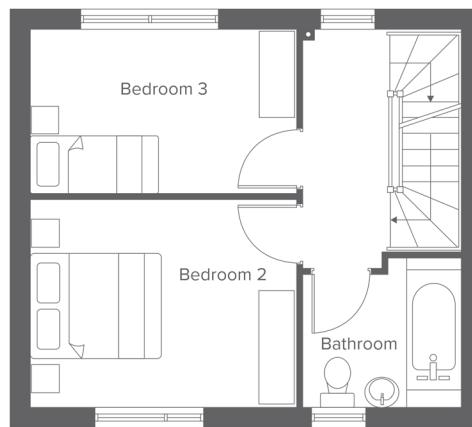
The Crompton St Georges Row

3-bedroom home, sleeps 5

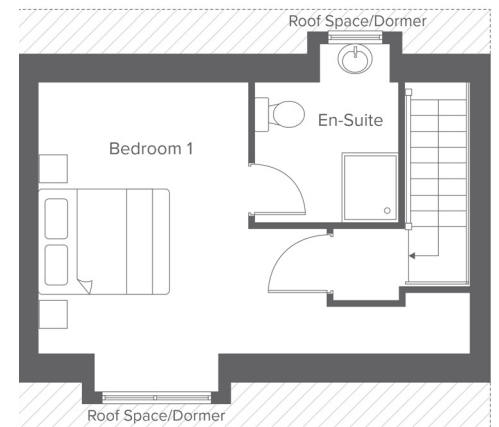
Ground floor



First floor



Second floor




Total size: 92.5 m2 / 995 ft2


Ground Floor	Metric	Imperial
Kitchen/Living	5.4 x 5.1	17'8" x 16'8"
W.C.	2.1 x 1.0	5'10" x 3'3"


First Floor	Metric	Imperial
Bedroom 2	3.0 x 3.8	9'10" x 12'5"
Bedroom 3	2.3 x 3.8	7'6" x 12'5"
Bathroom	2.1 x 2.3	6'10" x 7'6"


Second Floor	Metric	Imperial
Bedroom 1	3.9 x 4.1	12'9" x 13'5"
En-Suite	2.6 x 2.0	8'6" x 6'6"


Contact our team

 01204 208 315

 yourhousinggroup.co.uk

 @yourhousinggroup

 @Your_Housing

 @yourhousing