

# The Crompton St George's Row

3-bedroom home, sleeps 5

3 | 

2 | 

1 | 



## Key features

- Set over three storeys
- Two double bedrooms
- En-suite from master bedroom
- Downstairs W.C.
- Separate kitchen
- Open plan living/dining area
- Designated parking space



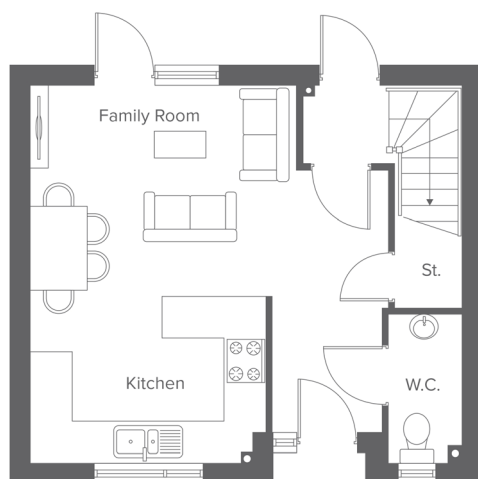
**The Crompton**  
Rent to Buy plots  
D7-D10

**St Georges Row, Pool St, Bolton, BL1 2PF**  
A range of stylish 2, 3 & 4-bedroom town houses

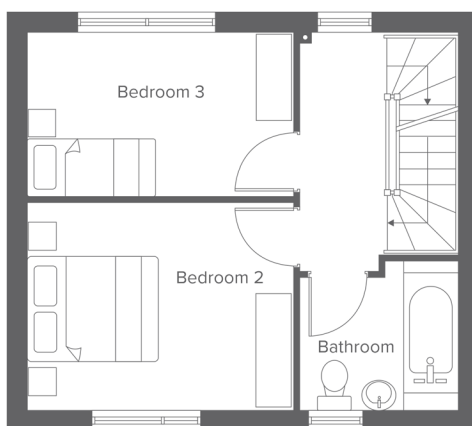
# The Crompton St Georges Row

3-bedroom home, sleeps 5

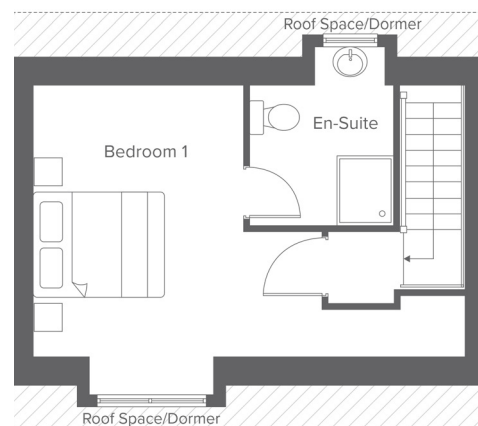
Ground floor



First floor



Second floor




**Total size: 92.7 m2 / 997.81 ft2**

Ground Floor	Metric	Imperial
Kitchen/Living	5.4 x 5.1	17'8" x 16'8"
W.C.	2.1 x 1.0	5'10" x 3'3"


First Floor	Metric	Imperial
Bedroom 2	3.0 x 3.8	9'10" x 12'5"
Bedroom 3	2.3 x 3.8	7'6" x 12'5"
Bathroom	2.1 x 2.3	6'10" x 7'6"


Second Floor	Metric	Imperial
Bedroom 1	3.9 x 4.1	12'9" x 13'5"
En-Suite	2.6 x 2.0	8'6" x 6'6"


**Contact our team**

 01204 208 315

 [yourhousinggroup.co.uk](http://yourhousinggroup.co.uk)

 @yourhousinggroup

 @Your\_Housing

 @yourhousing