

The Haslam St George's Row

3-bedroom home, sleeps 5



2 | 

1 | 

1 | 



Artist's impression

Key features

- Set over three storeys
- Two double bedrooms
- En-suite from master bedroom
- Downstairs W.C.
- Separate kitchen
- Open plan living/dining area
- Driveway parking



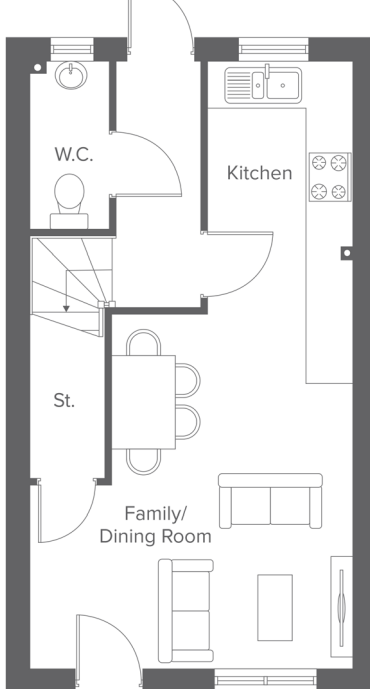
The Haslam
Rent to Buy plots
B1-B13

St Georges Row, Pool St, Bolton, BL1 2PF
A range of stylish 2, 3 & 4-bedroom town houses

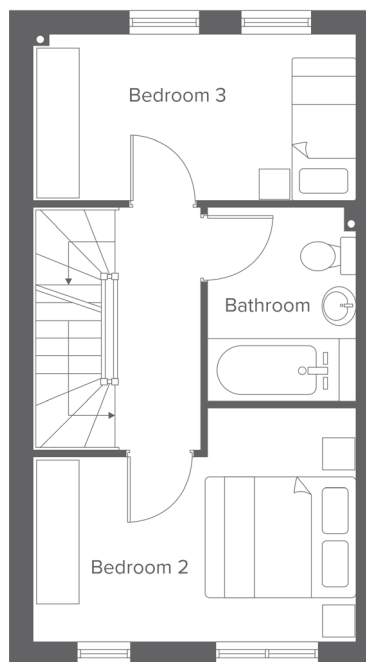
The Haslam St George's Row

3-bedroom home, sleeps 5

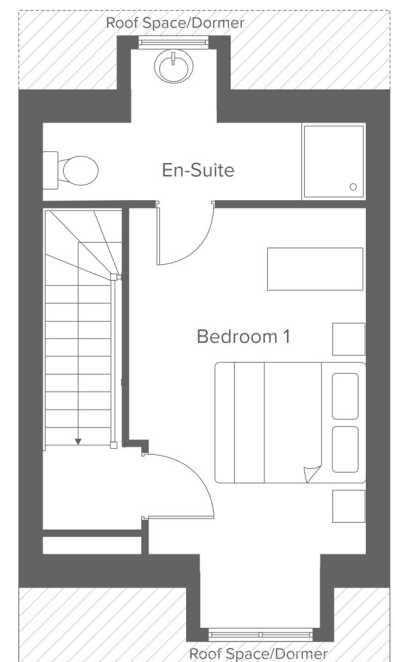
Ground floor



First floor



Second floor



Total size: 92.6 sqm, 996.73 sqft

Ground Floor	Metric	Imperial
Kitchen/Living	7.9 x 4.2	26'0" x 13'10"
W.C.	2.1 x 1.0	6'10" x 3'3"

First Floor	Metric	Imperial
Bedroom 2	3.0 x 4.2	9'10" x 13'9"
Bedroom 3	2.1 x 4.2	6'10" x 13'9"
Bathroom	2.5 x 1.9	8'2" x 6'2"

Second Floor	Metric	Imperial
Bedroom 1	4.0 x 2.7	13'1" x 9'10"
En-Suite	1.5 x 3.8	4'11" x 13'9"

Contact our team

☎ 01204 208 315

🖱 yourhousinggroup.co.uk

📷 @yourhousinggroup

🐦 @Your_Housing

📘 @yourhousing