

The Brindley Kiln Nook

Three-bedroom home, sleeps five



3 | 

2 | 

1 | 



Artist's impression

Key features

- Two double bedrooms
- Downstairs W.C.
- En-suite to master bedroom
- Open plan kitchen and dining room
- Separate living room
- Driveway parking

Woodbank Street, Burslem, ST6 3AZ

A collection of 43 beautifully designed new homes



The Brindley

Available plots

Shared ownership

2, 3

Rent to Buy

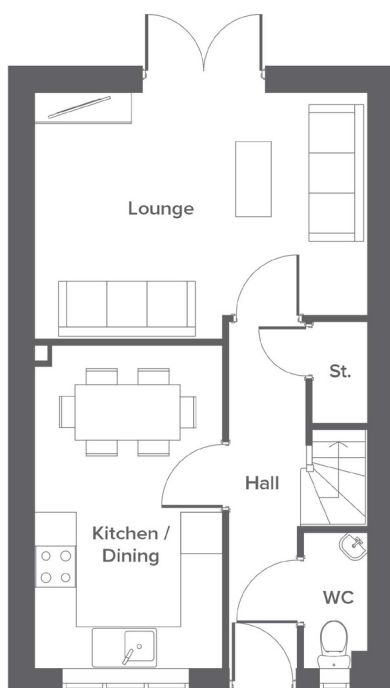
8, 9, 20, 22, 23,

24, 25

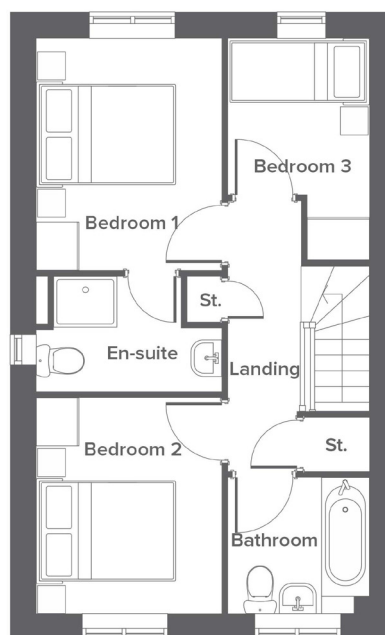
The Brindley Kiln Nook

Three-bedroom home, sleeps five

Ground floor



First floor



Room	Metric	Imperial
Kitchen/Dining	2.6 x 4.6	8'9" x 15'1"
Lounge	3.5 x 4.8	12'2" x 15'7"
W.C.	0.9 x 1.9	2'11" x 6'4"

Room	Metric	Imperial
Bedroom 1	2.6 x 3.3	8'9" x 10'11"
Bedroom 2	2.6 x 3.1	8'9" x 10'3"
Bedroom 3	2.0 x 3.1	6'7" x 10'5"
Bathroom	2.0 x 1.9	6'7" x 6'4"
En-suite	2.6 x 1.6	8'9" x 5'5"

Total size **79.7m² / 857.9ft²**

Get in touch



01782 491464



yourhousinggroup.co.uk



@yourhousing



yourhousinggroup



youtube.com/yhgtv