

The Edgerton St George's Row

4-bedroom home, sleeps 6



4 | 

2 | 

1 | 



Artist's impression

Key features

- Set over four storeys
- Three double bedrooms
- En-suite from master bedroom
- Downstairs W.C.
- Terrace from master bedroom
- Open plan kitchen/dining area
- Separate family room
- Driveway parking



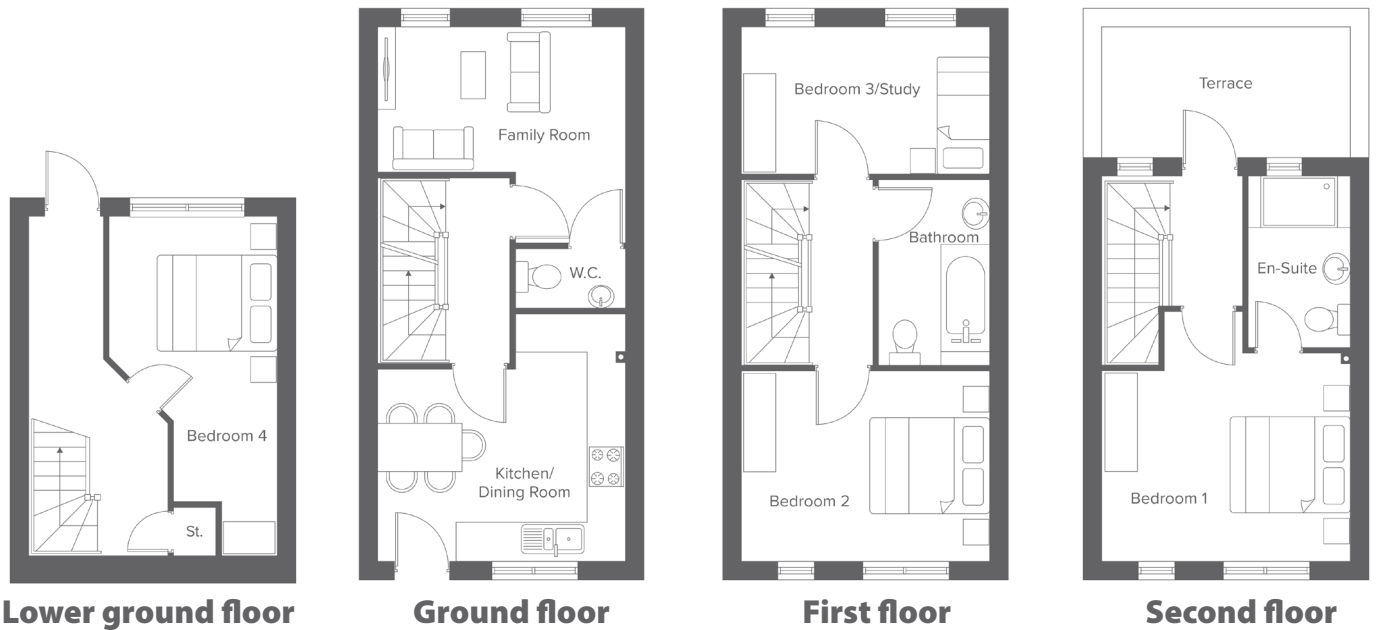
The Edgerton
Shared Ownership plots
E5-E6

Rent to Buy plots
E1-E4

St Georges Row, Pool St, Bolton, BL1 2PF
A range of stylish 2, 3 & 4-bedroom town houses

The Edgerton St George's Row

4-bedroom home, sleeps 6



Total size: 110.9 sq.m, 1,193 sqft


Lower Ground Metric Imperial
Bedroom 4 5.3 x 2.6 17'4" x 8'6"


Ground Floor Metric Imperial
Kitchen/Dining 4.7 x 3.8 15'5" x 12'5"
Family room 3.3 x 3.8 10'9" x 12'5"
W.C. 0.9 x 1.6 2'11" x 5'2"


First Floor Metric Imperial
Bedroom 2 3.0 x 3.8 9'10" x 12'5"
Bedroom 3 2.3 x 3.8 7'6" x 12'5"
Bathroom 2.9 x 1.7 9'6" x 5'6"


Second Floor Metric Imperial
Bedroom 1 3.3 x 3.8 10'9" x 12'8"
En-Suite 2.7 x 1.6 8'10" x 5'2"


Contact our team

 01204 208 315

 yourhousinggroup.co.uk

 @yourhousinggroup

 @Your_Housing

 @yourhousing