

# The Gosford Century Mill

3-bedroom home, sleeps 4

3 | 

2 | 

1 | 



Artist's impression

## Key features

- One double bedroom & two singles
- En suite to master bedroom
- Downstairs W.C.
- Open plan kitchen and dining room
- Separate living room
- Driveway parking



**The Gosford**  
Available plots  
3, 58 or 80

**George Street, Farnworth, BL4 9QT**

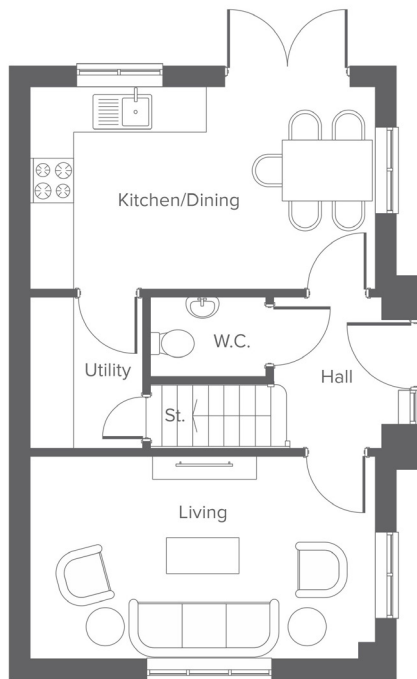
A collection of 106 beautifully designed new homes

Disclaimer: This document is a guide to the above development. The illustrations do not bind or imply the layout and specification will be as indicated. Please request a full development specification from the team. Correct at time of printing (June 2024). Second floor/ loft rooms will have restricted floor and head space in some areas. End terraces will have additional windows in some circumstances. Please check the specific plot with an advisor.

# The Gosford Century Mill

3-bedroom home, sleeps 4

Ground floor




Room	Metric	Imperial
Kitchen/Dining	5.03 x 2.95	16'6" x 9'8"
Living	5.03 x 2.95	16'6" x 9'8"
W.C.	1.68 x 1.13	5'6" x 3'8"
Utility	1.69 x 2.20	5'6" x 7'2"

First floor



Room	Metric	Imperial
Bedroom 1	3.56 x 2.95	11'8" x 9'8"
Bedroom 2	2.44 x 2.95	8'0" x 9'8"
Bedroom 3	2.50 x 2.95	7'10" x 9'8"
Bathroom	1.70 x 2.18	5'6" x 7'1"
En-suite	1.39 x 2.95	4'6" x 9'8"

Total size **83.2 m<sup>2</sup> / 895.6 ft<sup>2</sup>**

 Room for Air source heat pump/water tank

## Get in touch

 01204 896180

 [yourhousinggroup.co.uk](https://yourhousinggroup.co.uk)

 @yourhousing

 yourhousinggroup

 @Your\_Housing

 yhgtv