

# The Regent St George's Row

4-bedroom home, sleeps 6



4 | 

2 | 

1 | 



Artist's impression

## Key features

- Set over four storeys
- Four bedrooms
- En-suite from master bedroom
- Downstairs W.C.
- Terrace from master bedroom
- Separate kitchen
- Open plan living/dining area
- Driveway parking

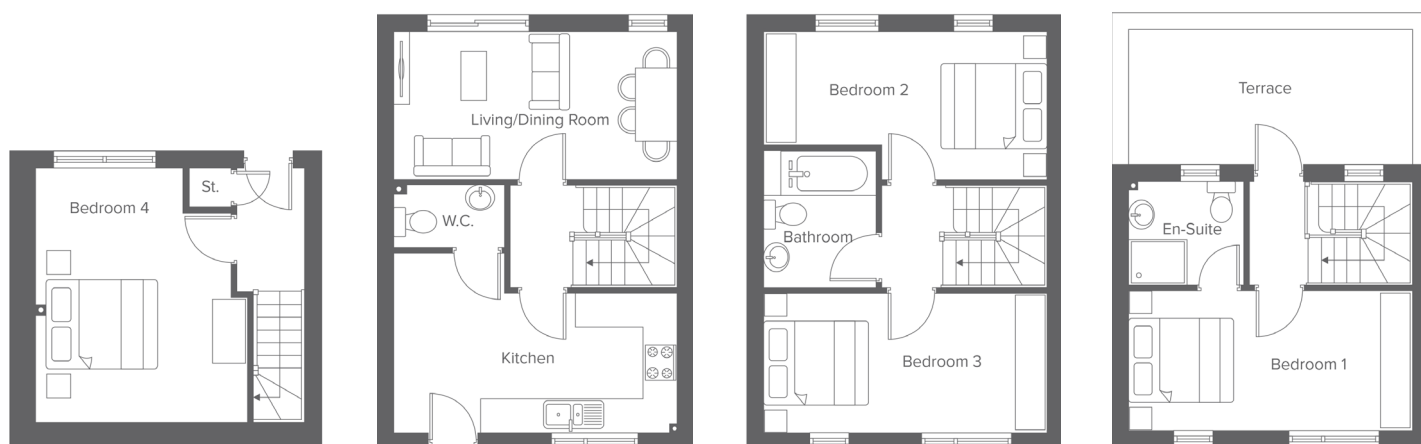


**The Regent**  
Shared Ownership plots  
A1-A12

**St Georges Row, Pool St, Bolton, BL1 2PF**  
A range of stylish 2, 3 & 4-bedroom town houses

# The Regent St George's Row

4-bedroom home, sleeps 6



Lower ground floor

Ground floor

First floor

Second floor

**Total size: 116 sqm, 1,248 sqft**

**Lower Ground Metric** Imperial  
Bedroom 4 4.5 x 3.9 14'9" x 12'9"

**Ground Floor Metric** Imperial  
Kitchen 2.5 x 5.0 8'2" x 16'4"  
Living/Dining 2.6 x 5.0 8'6" x 16'4"  
W.C. 1.1 x 1.9 3'7" x 6'2"

**First Floor Metric** Imperial  
Bedroom 2 2.6 x 5.0 8'6" x 16'4"  
Bedroom 3 2.4 x 5.0 7'10" x 16'4"  
Bathroom 2.4 x 1.9 7'10" x 6'2"

**Second Floor Metric** Imperial  
Bedroom 1 2.4 x 5.0 7'10" x 16'4"  
En-Suite 1.8 x 2.0 5'10" x 6'6"

Contact our team

📞 01204 208 315

🌐 yourhousinggroup.co.uk

📷 @yourhousinggroup

🐦 @Your\_Housing

📘 @yourhousing