

The Regent St George's Row

4-bedroom home, sleeps 8



4 | 

2 | 

1 | 



Artist's impression

Key features

- Set over four storeys
- Four double bedrooms
- En-suite from master bedroom
- Downstairs W.C.
- Terrace from master bedroom
- Separate kitchen
- Open plan living/dining area
- Driveway parking

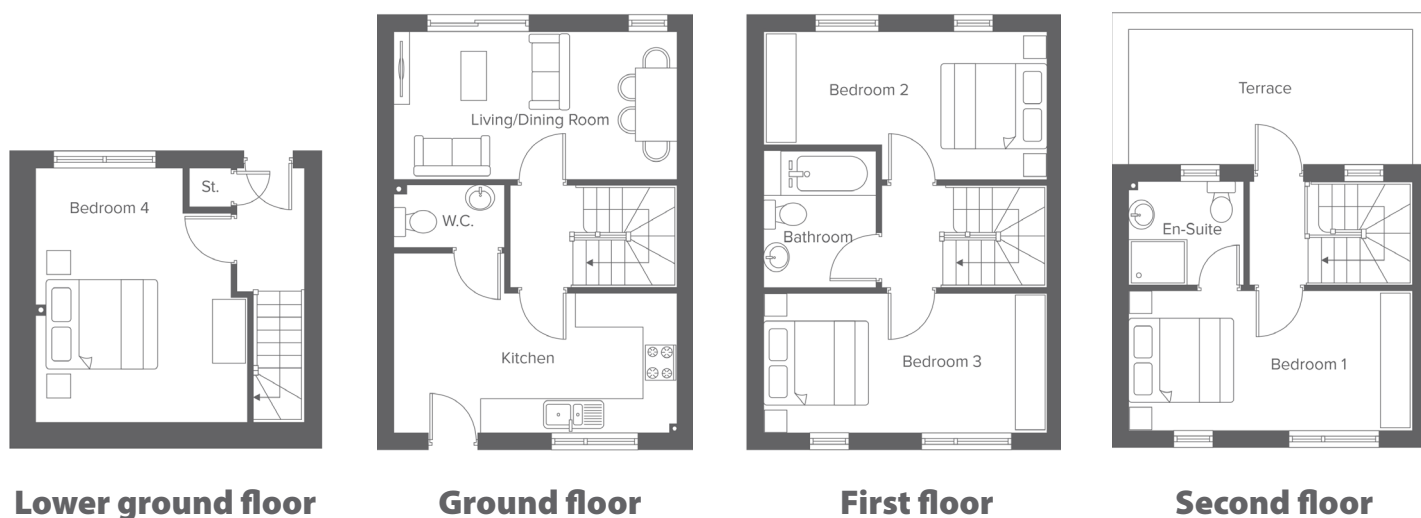


The Regent
Shared Ownership plots
A1-A12

St Georges Row, Pool St, Bolton, BL1 2PF
A range of stylish 2, 3 & 4-bedroom town houses

The Regent St George's Row

4-bedroom home, sleeps 8



Total size: 116.3 sqm, 1,251.84 sqft

Lower Ground Metric Imperial
Bedroom 4 4.5 x 3.9 14'9" x 12'9"

Ground Floor Metric Imperial
Kitchen 2.5 x 5.0 8'2" x 16'4"
Living/Dining 2.6 x 5.0 8'6" x 16'4"
W.C. 1.1 x 1.9 3'7" x 6'2"

First Floor Metric Imperial
Bedroom 2 2.6 x 5.0 8'6" x 16'4"
Bedroom 3 2.4 x 5.0 7'10" x 16'4"
Bathroom 2.4 x 1.9 7'10" x 6'2"

Second Floor Metric Imperial
Bedroom 1 2.4 x 5.0 7'10" x 16'4"
En-Suite 1.8 x 2.0 5'10" x 6'6"

Contact our team

📞 01204 208 315

🖱️ yourhousinggroup.co.uk

📷 @yourhousinggroup

🐦 @Your_Housing

📺 @yourhousing