

# The Gerrard Kiln Nook

Two-bedroom home, sleeps four



2 | 

1 | 

1 | 



Artist's impression

## Key features

- Two double bedrooms
- Downstairs W.C.
- Open plan kitchen and dining room
- Separate living room
- Patio doors to rear garden
- Driveway parking



## The Gerrard

Available plots

**Shared ownership**

6 or 7

**Rent to Buy**

4, 5, 42 or 43

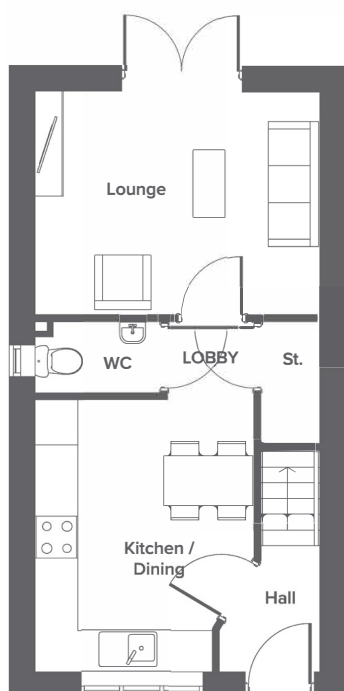
**Woodbank Street, Burslem, ST6 3AZ**

A collection of 43 beautifully designed new homes

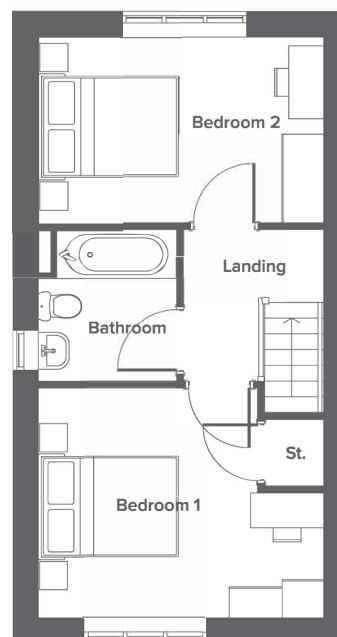
# The Gerrard Kiln Nook

Two-bedroom home, sleeps four

Ground floor



First floor



Room	Metric	Imperial
Kitchen/Dining	3.9 x 3.1	13'5" x 10'6"
Lounge	3.1 x 4.1	10'4" x 13'5"
W.C.	1.0 x 1.8	3'3" x 5'10"

Room	Metric	Imperial
Bedroom 1	4.0 x 3.3	13'5" x 10'9"
Bedroom 2	4.0 x 2.6	13'5" x 8'8"
Bathroom	1.9 x 2.1	6'5" x 7'1"

Total size **69.4m<sup>2</sup> / 747ft<sup>2</sup>**

## Get in touch

 01782 491464

 [yourhousinggroup.co.uk](https://yourhousinggroup.co.uk)

 @yourhousing

 yourhousinggroup

 [youtube.com/yhgtv](https://youtube.com/yhgtv)